

grospol 

True innovation in seating

F A B R I C S & F I N I S H I N G S

2022

---

[www.grospol.pl](http://www.grospol.pl)

# KOSMA

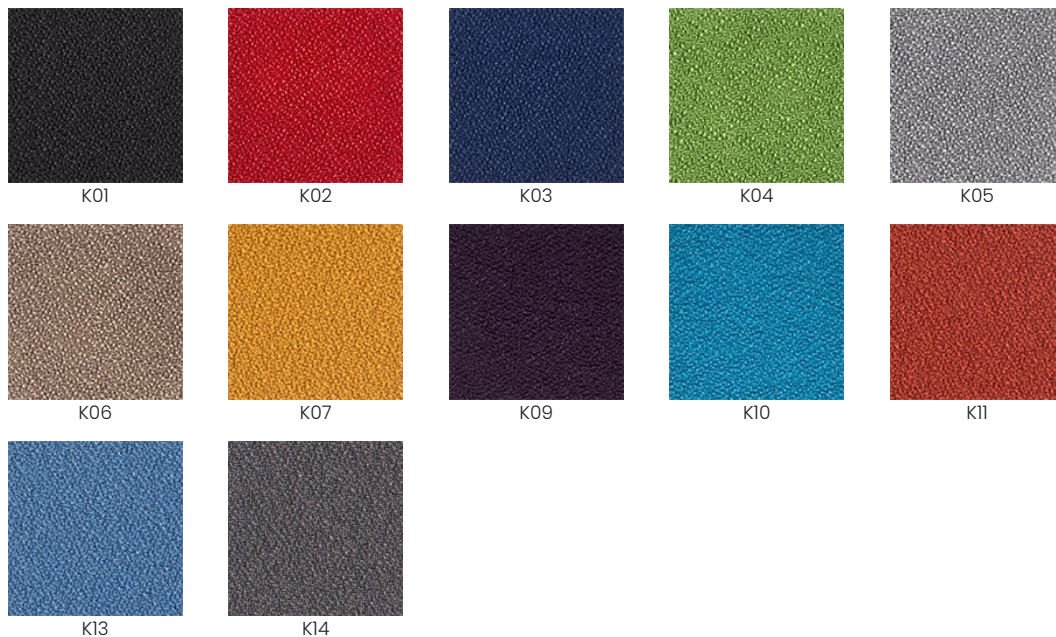


1st price group

## Colour →



FLAME  
RETARDANT



## Parameters →

**Composition:** 100% POLYESTER  
**Weight:** 322 G/M<sup>2</sup>  
**Abrosion:** 140 000 MARTINDALE CYCLES  
**Colour fastness to rubbing:** DRY 4/ WET 3-4  
**Pilling:** 4  
**Flammability:** EN 1021 PART 1 (CIGARETTE), EN 1021 PART 2 (MATCH)

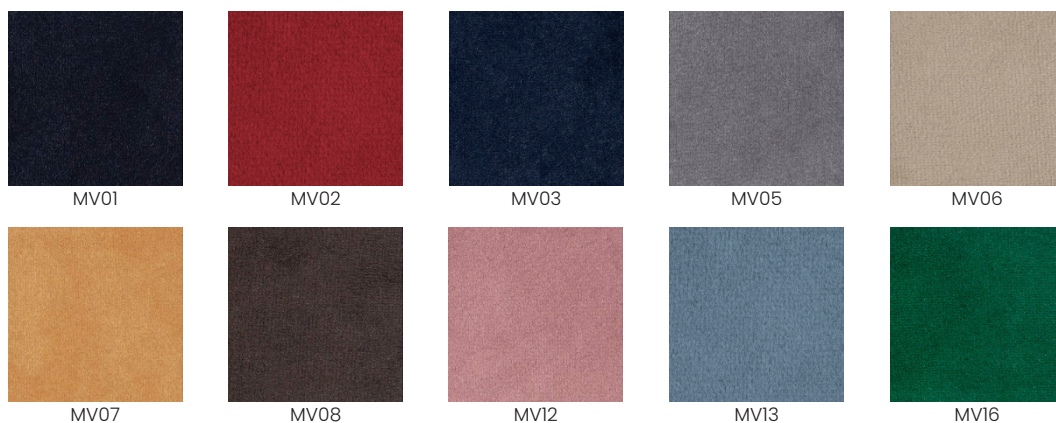
# MAGIC VELVET



1st price group

## Colour →

**Toptextil**  
FABRICS



## Parameters →

**Composition:** 100% POLYESTER  
**Weight:** 300 G/M<sup>2</sup>  
**Abrosion:** 60 000 MARTINDALE CYCLES  
**Colour fastness to rubbing:** DRY 4/ WET 4  
**Pilling:** 5  
**Flammability:** EN 1021 PART 1 (CIGARETTE)

# NOTE

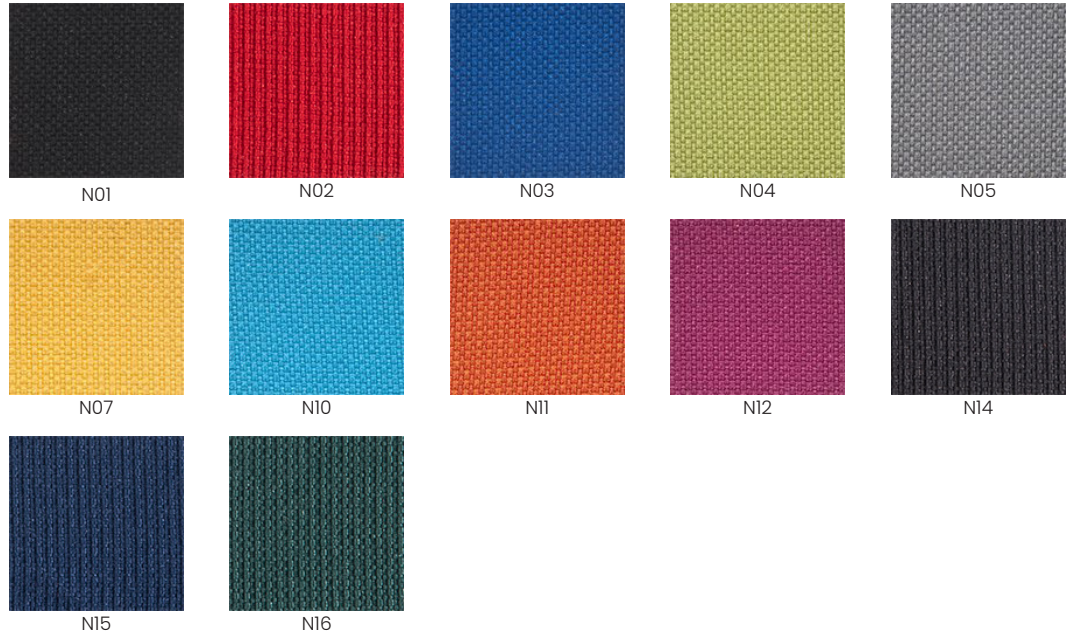


1st price group

## Colour →



FLAME  
RETARDANT



## Parameters →

<b>Composition:</b>	100% POLYESTER
<b>Weight:</b>	363 G/M <sup>2</sup>
<b>Abrosion:</b>	160 000 MARTINDALE CYCLES
<b>Colour fastness to rubbing:</b>	DRY 4-5/ WET 4-5
<b>Pilling:</b>	5
<b>Flammability:</b>	EN 1021 PART 1 (CIGARETTE), EN 1021 PART 2 (MATCH)

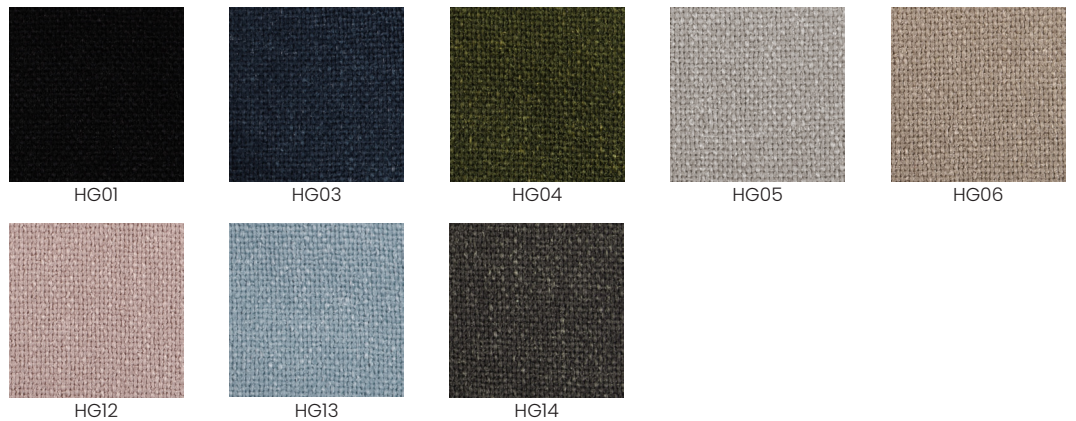
# HYGGE



2nd price group

## Colour →

**Toptextil**  
FABRICS



## Parameters →

<b>Composition:</b>	100% POLYESTER
<b>Weight:</b>	240 G/M <sup>2</sup>
<b>Abrosion:</b>	100 000 MARTINDALE CYCLES
<b>Colour fastness to rubbing:</b>	DRY 5/ WET 4-5
<b>Pilling:</b>	4
<b>Flammability:</b>	EN 1021 PART 1 (CIGARETTE)



# MEDLEY



2nd price group

## Colour →



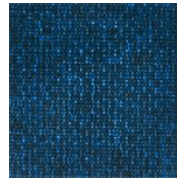
FLAME  
RETARDANT



MD01



MD02



MD03



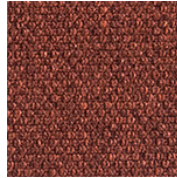
MD04



MD05



MD06



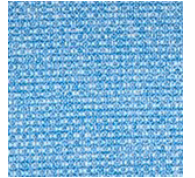
MD07



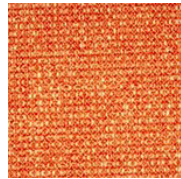
MD08



MD09



MD10



MD11



MD13

## Parameters →

**Composition:**

100% POLYESTER

**Weight:**

364 G/M<sup>2</sup>

**Abrosion:**

75 000 MARTINDALE CYCLES

**Colour fastness to light:**

5-7

**Colour fastness to rubbing:**

DRY 4-5/ WET 4-5

**Pilling:**

4

**Flammability:**

EN 1021 PART 1 (CIGARETTE), EN 1021 PART 2 (MATCH).

# CURA

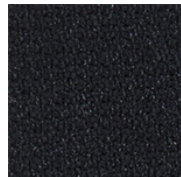


2nd price group

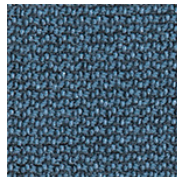
## Colour →



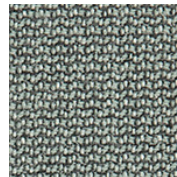
FLAME  
RETARDANT



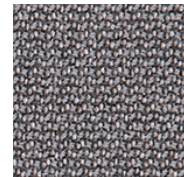
CU01



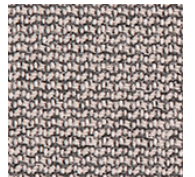
CU03



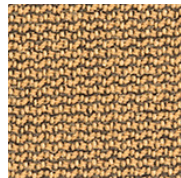
CU04



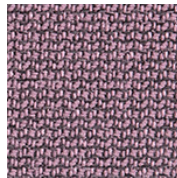
CU05



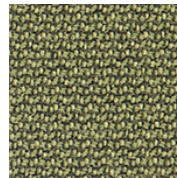
CU06



CU07



CU10



CU16

## Parameters →

**Composition:**

100% POLYESTER

**Weight:**

480 G/M<sup>2</sup>

**Abrosion:**

140 000 MARTINDALE CYCLES

**Colour fastness to rubbing:**

DRY 4/ WET 3-4

**Pilling:**

4

**Flammability:**

EN 1021 PART 1 (CIGARETTE), EN 1021 PART 2 (MATCH).

# — STRONG



3rd price group

## Colour →

### FARGOTEX



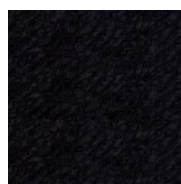
PRZYJAZNE ZWIERZĘTOM  
PET FRIENDLY



ŁATWE CZYSZCZENIE WODĄ  
EASY WATER CLEANING



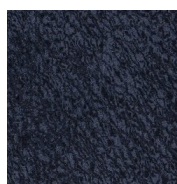
OCHRONA PRZED WIRUSAMI  
VIRUS PROTECT



SG01



SG02



SG03



SG04



SG05



SG06



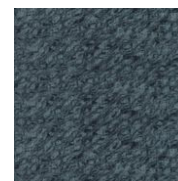
SG07



SG08



SG12



SG13



SG14

## Parameters →

**Composition:**

100% POLYESTER

**Weight:**

381 G/M<sup>2</sup>

**Abrosion:**

50 000 MARTINDALE CYCLES

**Colour fastness to light:**

5

**Colour fastness to rubbing:**

DRY 4/ WET 3-4

**Pilling:**

4/5

**Flammability:**

BS 5852: PART 1: 1979, SOURCE 0 (CIGARETTE)

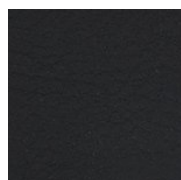
# — VALENCIA



3rd price group

## Colour →

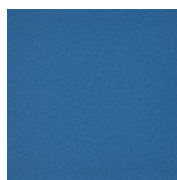
**PERMABLOK<sup>3</sup>**  
ADVANCED VINYL PROTECTION



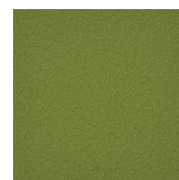
VL01



VL02



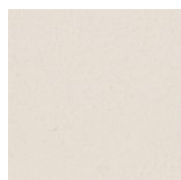
VL03



VL04



VL05



VL06



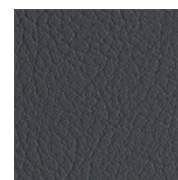
VL07



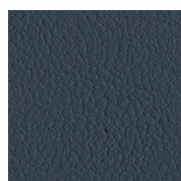
VL09



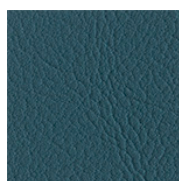
VL11



VL14



VL15



VL16

## Parameters →

**Composition:**

100% VINYL-COMPOUND / 100% POLYESTER HI-LOFT2TM BACKING

**Weight:**

650 G/M<sup>2</sup>

**Abrosion:**

>300 000 MARTINDALE CYCLES

**Colour fastness to light:**

>7

**Colour fastness to rubbing:**

DRY 4-5/ WET 5

**Flammability:**

EN 1021 PART 1 (CIGARETTE), EN 1021 PART 2 (MATCH).

# — FLEX



3rd price group

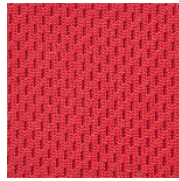
Colour →



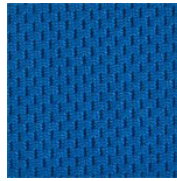
FLAME  
RETARDANT



FX01



FX02



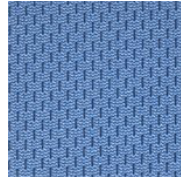
FX03



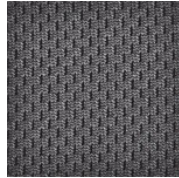
FX04



FX05



FX08



FX09



FX10

Parameters →

**Composition:** 100% POLYESTER  
**Weight:** 480 G/M<sup>2</sup>  
**Abrosion:** 80 000 MARTINDALE CYCLES  
**Colour fastness to rubbing:** DRY 4-5/ WET 4-5  
**Pilling:** 4-5  
**Flammability:** EN 1021 PART 1 (CIGARETTE), EN 1021 PART 2 (MATCH)

# — FAME



4th price group

Colour →



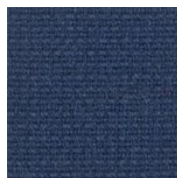
FLAME  
RETARDANT



FM01



FM02



FM03



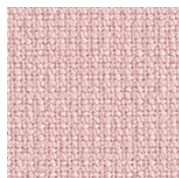
FM04



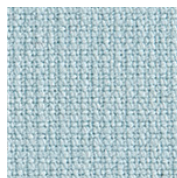
FM05



FM07



FM12\*



FM13\*

Parameters →

**Composition:** 95% WOOL, 5% POLYAMIDE  
**Weight:** 450 G/M<sup>2</sup>  
**Abrosion:** 200 000 MARTINDALE CYCLES  
**Colour fastness to light:** 5-7  
**Colour fastness to rubbing:** DRY 4-5/ WET 4-5  
**Pilling:** 4  
**Flammability:** EN 1021 PART 1 (CIGARETTE), EN 1021 PART 2 (MATCH).

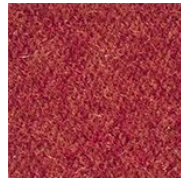


# — SYNERGY

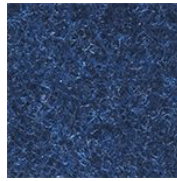


4th price group

Colour →



SR02\*



SR03



SR04\*



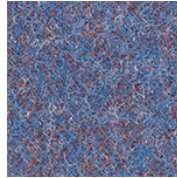
SR05



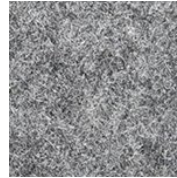
SR06



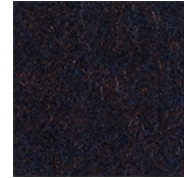
SR07



SR08\*



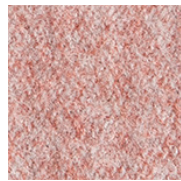
SR09



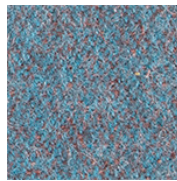
SR10\*



SR11



SR12\*



SR13\*

Parameters →

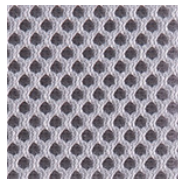
<b>Composition:</b>	95% WOOL, 5% POLYAMIDE
<b>Weight:</b>	400 G/M <sup>2</sup>
<b>Abrosion:</b>	100 000 MARTINDALE CYCLES
<b>Colour fastness to light:</b>	5
<b>Colour fastness to rubbing:</b>	DRY 4/ WET 4
<b>Pilling:</b>	4
<b>Flammability:</b>	EN 1021 PART 1 (CIGARETTE), EN 1021 PART 2 (MATCH).

# — MESH RUNNER

Colour →



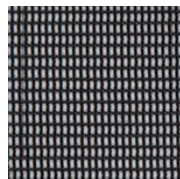
RU01



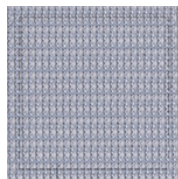
RU05

# — MESH STRING

Colour →



ST01



ST05

Parameters →

<b>Composition:</b>	100% POLYESTER
<b>Weight:</b>	360 G/M <sup>2</sup>
<b>Abrosion:</b>	70 000 MARTINDALE CYCLES
<b>Colour fastness to light:</b>	5-7
<b>Colour fastness to rubbing:</b>	DRY 4-5/ WET 4-5
<b>Pilling:</b>	5
<b>Flammability:</b>	EN 1021 PART 1 (CIGARETTE), EN 1021 PART 2 (MATCH).

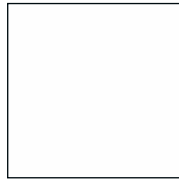
\* Fabric until stocks last.

# — MDF

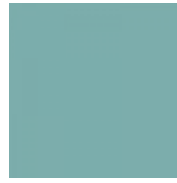
Colours →



RAL 9005



RAL 9003



RAL 6034



NCS S5000N



NCS S3005 Y50R

Parameters →

Thickness: 18 MM  
Diameter: 80 CM

# — STEEL TABLE TOP

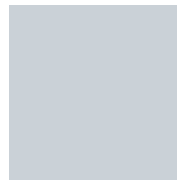
Colours →



BLACK



WHITE



GREY

Parameters →

Thickness: 6 MM  
Diameter: 80 CM

# — WOOD

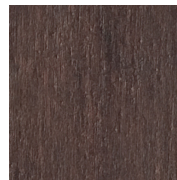
Colours →



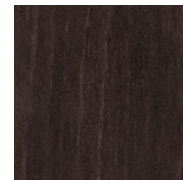
1. NATURAL BEECH



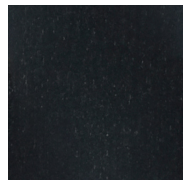
6. LIGHT WALNUT



7. DARK WALNUT



9. WENGE



10. BLACK



11. LIGHT PATINA



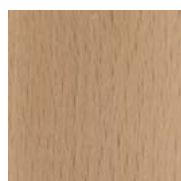
13. BLACK PATINA

Description →

Selected beech wood stained and varnished in chosen Colour.

# — OAK VENEER

Colours →



1. NATURAL OAK

Description →

Eco-friendly, natural oak veneer. The stain varnish meets the highest environmental standards and poses absolutely no health risk. Applied twice, by spraying using the latest technology.



## HEADQUARTERS

---

### **Grospol**

Ostródzka 53, 03-289 Warsaw, Poland

Tel. +48 22 743 67 55

Fax: +48 22 781 78 94

email: [handlowy@grospol.pl](mailto:handlowy@grospol.pl)

### **Export Department**

email: [export@grospol.pl](mailto:export@grospol.pl)

### **Complaints Department**

email: [reklamacje@grospol.pl](mailto:reklamacje@grospol.pl)

---

## MANUFACTURE

Południowa 12/14, 95-060 Brzeziny, Poland

[www.grospol.pl](http://www.grospol.pl)